

Human PTH / PTH1 / Parathyroid Hormone (aa 32-65, GST Tag) recombinant protein



Catalog Number: 503555

General Information

Gene Name Synonym

Liver-type aldolase

Protein Construction

A DNA sequence encoding the human PTH (P05062) (Ser 32-Phe 65) was fused with the GST tag at the N-terminus.

Organism

Human

Expression Host

E. coli

QC Testing

Purity

> 96 % as determined by SDS-PAGE

Endotoxin

Please contact us for more information.

Stability

Samples are stable for up to twelve months from date of receipt at -70°C

Predicted N terminal

Met

Molecular Mass

The recombinant human PTH/GST chimera consists of 265 amino acids and has a predicted

molecular mass of 31 kDa. It migrates as an approximately 30 kDa band in SDS-PAGE under reducing conditions.

Formulation

Lyophilized from sterile PBS, pH 7.5

1. 5 % trehalose and mannitol are added as protectants before lyophilization.

2. Please contact us for any concerns or special requirements.

Usage Guide

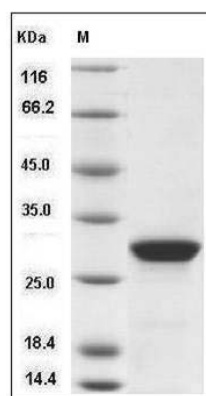
Storage

Store it under sterile conditions at -20°C to -80°C. It is recommended that the protein be aliquoted for optimal storage. Avoid repeated freeze-thaw cycles.

Reconstitution

Adding sterile water, prepare a stock solution of 0.25 mg/ml. Concentration is measured by UV-Vis.

SDS-PAGE



Human PTH / parathyroid hormone Protein (aa 32-65, GST Tag) SDS-PAGE