

Rat EpCAM/TROP-1/TACSTD1 (Fc Tag) recombinant protein



Catalog Number: 503547

General Information

Gene Name Synonym

Epithelial glycoprotein 314; Protein D5.7A; Tumor-associated calcium signal transducer 1

Protein Construction

A DNA sequence encoding the rat EPCAM (O55159) (Met1-Thr266) was expressed, fused with the Fc region of human IgG1 at the C-terminus.

Organism

Rat

Expression Host

Human Cells

QC Testing

Purity

> 98 % as determined by SDS-PAGE

Endotoxin

< 1.0 EU per μg of the protein as determined by the LAL method

Stability

Samples are stable for up to twelve months from date of receipt at -70°C

Predicted N terminal

Gln 24

Molecular Mass

The recombinant rat EPCAM/Fc is a disulfide-

linked homodimer. The reduced monomer comprises 484 amino acids and has a predicted molecular mass of 54.8 kDa. The apparent molecular mass of the protein is approximately 61 and 37 kDa in SDS-PAGE under reducing conditions.

Formulation

Lyophilized from sterile PBS, pH 7.4

1. 5 % trehalose and mannitol are added as protectants before lyophilization.

2. Please contact us for any concerns or special requirements.

Usage Guide

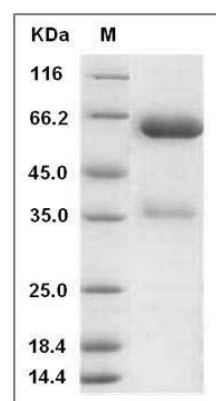
Storage

Store it under sterile conditions at -20°C to -80°C . It is recommended that the protein be aliquoted for optimal storage. Avoid repeated freeze-thaw cycles.

Reconstitution

Adding sterile water, prepare a stock solution of 0.25 mg/ml. Concentration is measured by UV-Vis.

SDS-PAGE



Rat EpCAM / TROP-1 / TACSTD1 Protein (Fc Tag)
SDS-PAGE