

Rat DLL1 / Delta-like 1 (Fc Tag) recombinant protein



Catalog Number: 503511

General Information

Protein Construction

A DNA sequence encoding the rat DLL1 (EDL99825.1) (Met1-Ser534) was expressed with the Fc region of human IgG1 at the C-terminus.

Organism

Rat

Expression Host

Human Cells

QC Testing

Purity

(48.5+7.4+30.3) % as determined by SDS-PAGE

Endotoxin

< 1.0 EU per μg of the protein as determined by the LAL method

Stability

Samples are stable for up to twelve months from date of receipt at -70°C

Predicted N terminal

Ser 22

Molecular Mass

The recombinant rat DLL1/Fc is a disulfide-linked homodimer. The reduced monomer comprises 752 amino acids and has a predicted molecular mass of 82.4 kDa. The apparent molecular mass of the

protein is approximately 105.1, 57, 38.7 kDa in SDS-PAGE under reducing conditions due to glycosylation.

Formulation

Lyophilized from sterile PBS, pH 7.4.

1. 5 % trehalose and mannitol are added as protectants before lyophilization.

2. Please contact us for any concerns or special requirements.

Usage Guide

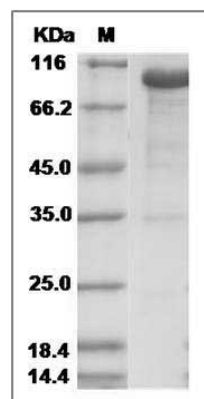
Storage

Store it under sterile conditions at -20°C to -80°C . It is recommended that the protein be aliquoted for optimal storage. Avoid repeated freeze-thaw cycles.

Reconstitution

Adding sterile water, prepare a stock solution of 0.25 mg/ml. Concentration is measured by UV-Vis.

SDS-PAGE



Rat DLL1 / Delta-like Protein (Fc Tag) 1 Protein (Fc Tag) SDS-PAGE