

# Rhesus Alpha amylase / AMY2A (His Tag) recombinant protein



Catalog Number: 503500

## General Information

### Protein Construction

A DNA sequence encoding the rhesus AMY2A (H9EX43) (Met1-Leu511) was expressed with a polyhistidine tag at the C-terminus.

### Organism

Rhesus

### Expression Host

Human Cells

## QC Testing

### Purity

> 95 % as determined by SDS-PAGE

### Endotoxin

< 1.0 EU per  $\mu\text{g}$  of the protein as determined by the LAL method

### Stability

Samples are stable for up to twelve months from date of receipt at  $-70^{\circ}\text{C}$

### Predicted N terminal

Gln 16

### Molecular Mass

The recombinant rhesus AMY2A comprises 507 amino acids and has a calculated molecular mass

of 57.2 KDa.

### Formulation

Lyophilized from sterile PBS, pH 7.4.

1. 5 % trehalose and mannitol are added as protectants before lyophilization.

2. Please contact us for any concerns or special requirements.

## Usage Guide

### Storage

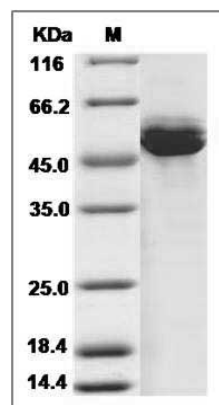
Store it under sterile conditions at  $-20^{\circ}\text{C}$  to  $-80^{\circ}\text{C}$ .

It is recommended that the protein be aliquoted for optimal storage. Avoid repeated freeze-thaw cycles.

### Reconstitution

Adding sterile water, prepare a stock solution of 0.25 mg/ml. Concentration is measured by UV-Vis.

### SDS-PAGE



Cynomolgus AMY2A / Alpha-amylase Protein (His Tag) SDS-PAGE