

Rat CLEC4D (His Tag) recombinant protein



Catalog Number: 503486

General Information

Gene Name Synonym

C-type lectin superfamily member 8

Protein Construction

A DNA sequence encoding the rat CLEC4D (Q69FH1) (Trp48-Lys218) was expressed, fused with a polyhistidine tag at the N-terminus.

Organism

Rat

Expression Host

Human Cells

QC Testing

Purity

> 88 % as determined by SDS-PAGE

Endotoxin

< 1.0 EU per μg of the protein as determined by the LAL method

Stability

Samples are stable for up to twelve months from date of receipt at -70°C

Predicted N terminal

His

Molecular Mass

The recombinant rat CLEC4D is a disulfide-linked

homodimer. The reduced monomer comprises 191 amino acids and has a predicted molecular mass of 22.3 kDa. The apparent molecular mass of the protein is approximately 29 kDa in SDS-PAGE under reducing conditions.

Formulation

Lyophilized from sterile PBS, pH 7.4

1. 5 % trehalose and mannitol are added as protectants before lyophilization.

2. Please contact us for any concerns or special requirements.

Usage Guide

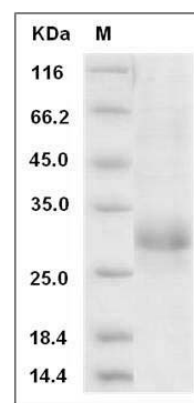
Storage

Store it under sterile conditions at -20°C to -80°C . It is recommended that the protein be aliquoted for optimal storage. Avoid repeated freeze-thaw cycles.

Reconstitution

Adding sterile water, prepare a stock solution of 0.25 mg/ml. Concentration is measured by UV-Vis.

SDS-PAGE



Rat CLEC4D / CLECSF8 Protein (His Tag) SDS-PAGE