

## General Information

### Gene Name Synonym

Ephrin B2 (Predicted); Protein Efnb2

### Protein Construction

A DNA sequence encoding the rat EFNB2 (NP\_001100798.1) extracellular domain (Met 1-Ala 229) was fused with the Fc region of human IgG1 at the C-terminus.

### Organism

Rat

### Expression Host

Human Cells

## QC Testing

### Activity

1. Measured by its binding ability in a functional ELISA.
2. Immobilized mouse EPHB4-His (Cat:502562) at 10 µg/mL (100 µl/well) can bind Rat EphrinB2-Fc (Cat:503471), The EC<sub>50</sub> of Rat EphrinB2-Fc (Cat:503471) is 10 ng/mL.

### Purity

> 90 % as determined by SDS-PAGE

### Endotoxin

< 1.0 EU per µg of the protein as determined by the LAL method

### Stability

Samples are stable for up to twelve months from date of receipt at -70°C

### Predicted N terminal

Ser 28

## Molecular Mass

The recombinant rat EFNB2/Fc is a disulfide-linked homodimer. The reduced monomer comprises 443 amino acids and predicts a molecular mass of 49 kDa. The apparent molecular mass of the rat EFNB2/Fc monomer is approximately 55 kDa in SDS-PAGE under reducing conditions.

## Formulation

Lyophilized from sterile PBS, pH 7.4

1. 5 % trehalose and mannitol are added as protectants before lyophilization.
2. Please contact us for any concerns or special requirements.

## Usage Guide

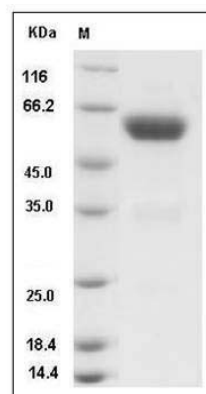
### Storage

Store it under sterile conditions at -20°C to -80°C. It is recommended that the protein be aliquoted for optimal storage. Avoid repeated freeze-thaw cycles.

### Reconstitution

Adding sterile water, prepare a stock solution of 0.25 mg/ml. Concentration is measured by UV-Vis.

## SDS-PAGE



Rat Ephrin-B2 / EFNB2 Protein (Fc Tag) SDS-PAGE