

Human GM-CSF / CSF2 (His Tag) recombinant protein



Catalog Number: 503464

General Information

Gene Name Synonym

Colony-stimulating factor; Molgramostin; Sargramostim

Protein Construction

A DNA sequence encoding the mature form of human GM-CSF (NP_000749.2) (Ala 18-Glu 144) was expressed, with a polyhistidine tag at the N-terminus.

Organism

Human

Expression Host

Human Cells

QC Testing

Activity

Measured in a cell proliferation assay using TF-1 human erythroleukemic cells.
The ED₅₀ for this effect is typically 0.1-0.6 ng/mL.

Purity

> 92 % as determined by SDS-PAGE

Endotoxin

< 1.0 EU per µg of the protein as determined by the LAL method

Stability

Samples are stable for up to twelve months from date of receipt at -70°C

Predicted N terminal

His

Molecular Mass

The recombinant human GM-CSF consists of 147 amino acids and has a predicted molecular mass of 16.9 kDa. In SDS-PAGE under reducing conditions, the apparent molecular mass of rh GM-CSF is approximately 24-27 kDa due to glycosylation.

Formulation

Lyophilized from sterile PBS, pH 7.4
1. 5 % trehalose and mannitol are added as protectants before lyophilization.
2. Please contact us for any concerns or special requirements.

Usage Guide

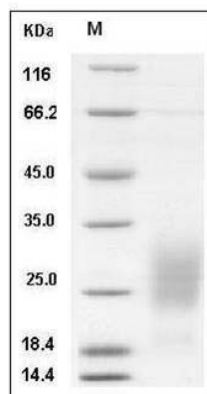
Storage

Store it under sterile conditions at -20°C to -80°C. It is recommended that the protein be aliquoted for optimal storage. Avoid repeated freeze-thaw cycles.

Reconstitution

Adding sterile water, prepare a stock solution of 0.25 mg/ml. Concentration is measured by UV-Vis.

SDS-PAGE



Human GM-CSF / CSF2 Protein (His Tag) SDS-PAGE