

Human E-Cadherin/CDH1/E-cad/CD324 (His Tag) recombinant protein



Catalog Number: 503462

General Information

Gene Name Synonym

CAM 120/80; Epithelial cadherin; Uvomorulin; E-Cad/CTF1; E-Cad/CTF2; E-Cad/CTF3

Protein Construction

A DNA sequence encoding the human CDH1 (NP_004351.1) (Met1-Ala709) was expressed with a polyhistidine tag at the C-terminus.

Organism

Human

Expression Host

Baculovirus-Insect Cells

QC Testing

Purity

> 90 % as determined by SDS-PAGE.

Endotoxin

< 1.0 EU per μ g protein as determined by the LAL method.

Stability

Samples are stable for up to twelve months from date of receipt at -70°C

Predicted N terminal

Gln 23

Molecular Mass

The recombinant human CDH1 consists 698 amino acids and predicts a molecular mass of 77.2 kDa.

Formulation

Lyophilized from sterile 20 mM Tris, 500 mM NaCl, 10 % glycerol, pH 7.4.

1. 5 % trehalose and mannitol are added as protectants before lyophilization.
2. Please contact us for any concerns or special requirements.

Usage Guide

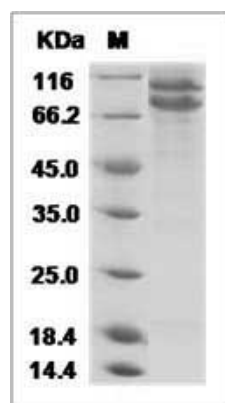
Storage

Store it under sterile conditions at -20°C to -80°C. It is recommended that the protein be aliquoted for optimal storage. Avoid repeated freeze-thaw cycles.

Reconstitution

Adding sterile water, prepare a stock solution of 0.25 mg/ml. Concentration is measured by UV-Vis.

SDS-PAGE



Human E-Cadherin / CDH1 / E-cad / CD324 Protein (His Tag)