

General Information

Gene Name Synonym

Lymphocyte function-associated AG-1 counter-receptor

Protein Construction

A DNA sequence encoding the mouse ICAM2 (NP_034624.1) (Met 1-Gln 222) was expressed with six amino acids (LEVLFQ) at the C-terminus.

Organism

Mouse

Expression Host

Human Cells

QC Testing

Activity

Measured by the ability of the immobilized protein to support the adhesion of PMA stimulated HSB2 human peripheral blood acute lymphoblastic leukemia cells.

When 5 x 10E4 cells/well are added to rmICAM1 coated plates (12.5 µg/mL with 100 µL/well), > 30% cells will adhere after 1 hour incubation at 37°C.

Purity

> 85 % as determined by SDS-PAGE

Endotoxin

< 1.0 EU per µg of the protein as determined by the LAL method

Stability

Samples are stable for up to twelve months from date of receipt at -70°C

Predicted N terminal

Ser 20

Molecular Mass

The recombinant mouse ICAM2 consists of 210 amino acids and has a calculated molecular mass of 23.6 kDa. The recombinant protein migrates as an approximately 38-42 kDa band in SDS-PAGE under reducing conditions.

Formulation

Lyophilized from sterile PBS, pH 7.4.

1. 5 % trehalose and mannitol are added as protectants before lyophilization.

2. Please contact us for any concerns or special requirements.

Usage Guide

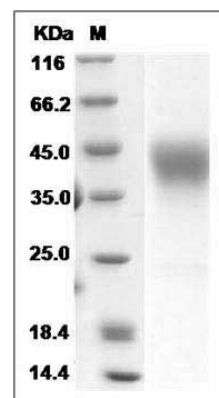
Storage

Store it under sterile conditions at -20°C to -80°C. It is recommended that the protein be aliquoted for optimal storage. Avoid repeated freeze-thaw cycles.

Reconstitution

Adding sterile water, prepare a stock solution of 0.25 mg/ml. Concentration is measured by UV-Vis.

SDS-PAGE



Mouse ICAM-2 / CD102 Protein SDS-PAGE