

# Human ALDH4A1 (His & GST Tag) recombinant protein



Catalog Number: 503418

## General Information

### Gene Name Synonym

Aldehyde dehydrogenase family 4 member A1; L-glutamate gamma-semialdehyde dehydrogenase

### Protein Construction

A DNA sequence encoding the mature form of human ALDH4A1 (AAH07581.1) (Lys 25-Gln 563) was fused with the N-terminal polyhistidine-tagged GST tag at the N-terminus.

### Organism

Human

### Expression Host

Baculovirus-Insect Cells

## QC Testing

### Purity

> 96 % as determined by SDS-PAGE

### Endotoxin

< 1.0 EU per  $\mu\text{g}$  of the protein as determined by the LAL method

### Stability

Samples are stable for up to twelve months from date of receipt at  $-70^{\circ}\text{C}$

### Predicted N terminal

Met

### Molecular Mass

The recombinant human ALDH4A1/GST chimera consists of 776 amino acids and has a calculated molecular mass of 86.8 KDa. It migrates as an approximately 75 KDa band in SDS-PAGE under reducing conditions.

### Formulation

Lyophilized from sterile 20mM Tris, 500mM NaCl, pH 8.5, 10% glycerol

1. 5 % trehalose and mannitol are added as protectants before lyophilization.
2. Please contact us for any concerns or special requirements.

## Usage Guide

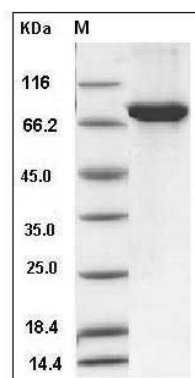
### Storage

Store it under sterile conditions at  $-20^{\circ}\text{C}$  to  $-80^{\circ}\text{C}$ . It is recommended that the protein be aliquoted for optimal storage. Avoid repeated freeze-thaw cycles.

### Reconstitution

Adding sterile water, prepare a stock solution of 0.25 mg/ml. Concentration is measured by UV-Vis.

### SDS-PAGE



Human ALDH4A1 Protein (His & GST Tag) SDS-PAGE