

# Human IL36B/IL1F8 (His Tag) recombinant protein



Catalog Number: 503401

## General Information

### Gene Name Synonym

FIL1 eta; Interleukin-1 eta; Interleukin-1 family member 8; Interleukin-1 homolog 2

### Protein Construction

A DNA sequence encoding the mature form of human IL1F8 (NP\_775270.1) (Lys 5-Glu 157) was expressed with a polyhistidine tag at the N-terminus.

### Organism

Human

### Expression Host

E. coli

## QC Testing

### Purity

> 95 % as determined by SDS-PAGE

### Endotoxin

Please contact us for more information.

### Stability

Samples are stable for up to twelve months from date of receipt at -70°C

### Predicted N terminal

Met

### Molecular Mass

The recombinant human IL1F8 consists of 169 amino acids and predicts a molecular mass of 19.3 KDa. It migrates as an approximately 20 KDa band in SDS-PAGE under reducing conditions.

### Formulation

Lyophilized from sterile PBS, pH 7.4

1. 5 % trehalose and mannitol are added as protectants before lyophilization.

2. Please contact us for any concerns or special requirements.

## Usage Guide

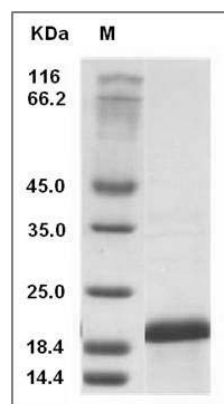
### Storage

Store it under sterile conditions at -20°C to -80°C. It is recommended that the protein be aliquoted for optimal storage. Avoid repeated freeze-thaw cycles.

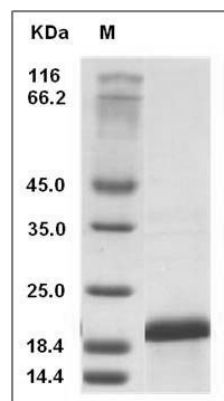
### Reconstitution

Adding sterile water, prepare a stock solution of 0.25 mg/ml. Concentration is measured by UV-Vis.

## SDS-PAGE



Human IL36B / IL1F8 Protein (His Tag) SDS-PAGE



Human IL36B / IL1F8 Protein (His Tag) SDS-PAGE