

Human I-309/CCL1/TCA-3 (Fc Tag) recombinant protein



Catalog Number: 503365

General Information

Gene Name Synonym

Small-inducible cytokine A1; T lymphocyte-secreted protein I-309

Protein Construction

A DNA sequence encoding the mature form of human CCL1 (NP_002972.1) (Lys 24-Lys 96) was fused with the Fc region of human IgG1 at the N-terminus.

Organism

Human

Expression Host

Human Cells

QC Testing

Purity

> 90 % as determined by SDS-PAGE

Endotoxin

< 1.0 EU per μg of the protein as determined by the LAL method

Stability

Samples are stable for up to twelve months from date of receipt at -70°C

Predicted N terminal

Glu 20

Molecular Mass

The recombinant human Fc/CCL1 is a disulfide-

linked homodimeric protein. The reduced monomer consists of 310 amino acids and predicts a molecular mass of 35 kDa. As a result of glycosylation, the rhCCL1/Fc monomer migrates as an approximately 38-42 kDa band in SDS-PAGE under reducing conditions.

Formulation

Lyophilized from sterile PBS, pH 7.4

1. 5 % trehalose and mannitol are added as protectants before lyophilization.

2. Please contact us for any concerns or special requirements.

Usage Guide

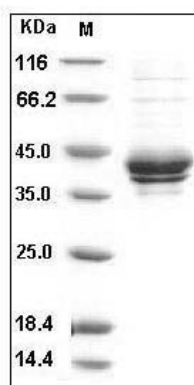
Storage

Store it under sterile conditions at -20°C to -80°C . It is recommended that the protein be aliquoted for optimal storage. Avoid repeated freeze-thaw cycles.

Reconstitution

Adding sterile water, prepare a stock solution of 0.25 mg/ml. Concentration is measured by UV-Vis.

SDS-PAGE



Human I-309 / CCL1 / TCA-3 Protein (Fc Tag)
SDS-PAGE