

# Rat SELP / P Selectin (Fc Tag) recombinant protein



Catalog Number: 503357

## General Information

### Protein Construction

A DNA sequence encoding the rat Selp (AAI01920.1) (Met1-Gln700) was expressed with the Fc region of human IgG1 at the C-terminus.

### Organism

Rat

### Expression Host

Human Cells

## QC Testing

### Activity

Measured by the ability of the immobilized protein to support the adhesion of U937 human histiocytic lymphoma cells.

When  $5 \times 10^4$  cells/well are added to rat SELP/Fc Chimera coated plates (10  $\mu\text{g}/\text{mL}$  with 100  $\mu\text{L}/\text{well}$ ), > 40% cells will adhere for 1 hour incubation at 37°C.

### Purity

> 95 % as determined by SDS-PAGE.

### Endotoxin

<1.0 EU per  $\mu\text{g}$  protein as determined by the LAL method.

### Stability

Samples are stable for up to twelve months from date of receipt at -70°C

### Predicted N terminal

Trp 42

### Molecular Mass

The recombinant rat Selp consists 897 amino acids and predicts a molecular mass of 98.7 kDa.

### Formulation

Lyophilized from sterile PBS, pH 7.4.

1. 5 % trehalose and mannitol are added as protectants before lyophilization.

2. Please contact us for any concerns or special requirements.

## Usage Guide

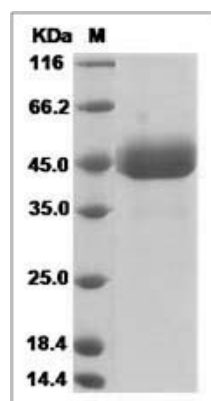
### Storage

Store it under sterile conditions at -20°C to -80°C. It is recommended that the protein be aliquoted for optimal storage. Avoid repeated freeze-thaw cycles.

### Reconstitution

Adding sterile water, prepare a stock solution of 0.25 mg/ml. Concentration is measured by UV-Vis.

### SDS-PAGE



Rat SELP / P Selectin Protein (Fc Tag) SDS-PAGE