

General Information

Gene Name Synonym

Anterior pituitary glycoprotein hormones common subunit alpha; Choriogonadotropin alpha chain; Chorionic gonadotropin subunit alpha; Follicle-stimulating hormone alpha chain; Follitropin alpha chain; Luteinizing hormone alpha chain; Lutropin alpha chain; Thyroid-stimulating hormone alpha chain; Thyrotropin alpha chain

Protein Construction

A DNA sequence encoding the human CGA (NP_000726.1) (Met1-Ser116) was expressed.

Organism

Human

Expression Host

Human Cells

QC Testing

Purity

> 90 % as determined by SDS-PAGE.

Endotoxin

<1.0 EU per μg protein as determined by the LAL method.

Stability

Samples are stable for up to twelve months from date of receipt at -70°C

Predicted N terminal

Ala 25

Molecular Mass

The recombinant human CGA consists of 92 amino acids and predicts a molecular mass of 10.2 kDa.

Formulation

Lyophilized from sterile PBS, pH 7.4.

1. 5 % trehalose and mannitol are added as protectants before lyophilization.

2. Please contact us for any concerns or special requirements.

Usage Guide

Storage

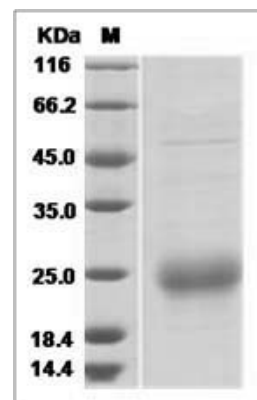
Store it under sterile conditions at -20°C to -80°C .

It is recommended that the protein be aliquoted for optimal storage. Avoid repeated freeze-thaw cycles.

Reconstitution

Adding sterile water, prepare a stock solution of 0.25 mg/ml. Concentration is measured by UV-Vis.

SDS-PAGE



Human CGA / HCG Protein