

## General Information

### Gene Name Synonym

Fallotein; Spinal cord-derived growth factor; VEGF-E; Platelet-derived growth factor C, latent form; Platelet-derived growth factor C, receptor-binding form

### Protein Construction

A DNA sequence encoding the mature form of human PDGF-C (NP\_057289.1) (Val 235-Gly 345) was expressed with the fused Fc region of human IgG1 at the N-terminus.

### Organism

Human

### Expression Host

Human Cells

## QC Testing

### Activity

Measured in a cell proliferation assay using Balb/3T3 mouse embryonic fibroblast cells. The ED<sub>50</sub> for this effect is typically 0.5-3 µg/mL.

### Purity

> 97 % as determined by SDS-PAGE

### Endotoxin

< 1.0 EU per µg of the protein as determined by the LAL method

### Stability

Samples are stable for up to twelve months from date of receipt at -70°C

### Predicted N terminal

Glu 20

## Molecular Mass

The recombinant human PDGFC/Fc is a disulfide-linked homodimeric protein. The reduced monomer consists of 348 amino acids and predicts a molecular mass of 39 kDa. As a result of glycosylation, rh PDGFC/Fc monomer is approximately 45 kDa in SDS-PAGE under reducing conditions.

## Formulation

Lyophilized from sterile 100mM Glycine, 10mM NaCl, 50mM Tris, pH 7.5

1. 5 % trehalose and mannitol are added as protectants before lyophilization.
2. Please contact us for any concerns or special requirements.

## Usage Guide

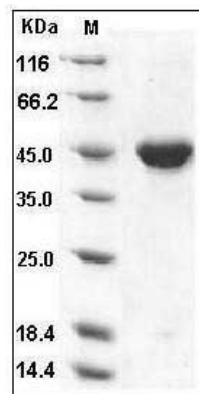
### Storage

Store it under sterile conditions at -20°C to -80°C. It is recommended that the protein be aliquoted for optimal storage. Avoid repeated freeze-thaw cycles.

### Reconstitution

Adding sterile water, prepare a stock solution of 0.25 mg/ml. Concentration is measured by UV-Vis.

## SDS-PAGE



Human PDGF-C Protein (Fc Tag) SDS-PAGE