

# Human Esterase D/ESD (His Tag) recombinant protein



Catalog Number: 503287

## General Information

### Gene Name Synonym

Cytoskeleton-associated protein 1; Cytoskeleton-associated protein CKAPI; Tubulin-specific chaperone B

### Protein Construction

A DNA sequence encoding the mature form of human ESD (Q99426) (Met1-Ala282) was expressed with a polyhistidine tag at the N-terminus.

### Organism

Human

### Expression Host

E. coli

## QC Testing

### Purity

> 95 % as determined by SDS-PAGE

### Endotoxin

Please contact us for more information.

### Stability

Samples are stable for up to twelve months from date of receipt at -70°C

### Predicted N terminal

His

### Molecular Mass

The recombinant human ESD consists of 297 amino acids and predicts a molecular mass of 33.4 KDa. It migrates as an approximately 34 KDa band in SDS-PAGE under reducing conditions.

### Formulation

Lyophilized from sterile PBS, pH 7.4

1. 5 % trehalose and mannitol are added as protectants before lyophilization.
2. Please contact us for any concerns or special requirements.

## Usage Guide

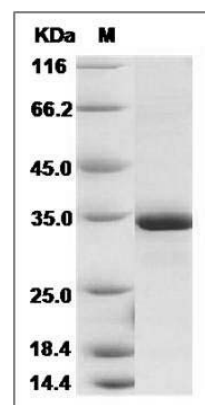
### Storage

Store it under sterile conditions at -20°C to -80°C. It is recommended that the protein be aliquoted for optimal storage. Avoid repeated freeze-thaw cycles.

### Reconstitution

Adding sterile water, prepare a stock solution of 0.25 mg/ml. Concentration is measured by UV-Vis.

### SDS-PAGE



Human Esterase D / ESD Protein (His Tag) SDS-PAGE