

General Information

Gene Name Synonym

Activated protein C receptor; Centrocyclin; Centrosomal protein CCD41; Endothelial cell protein C receptor

Protein Construction

A DNA sequence encoding the mouse PROCR (Q64695) extracellular domain (Met 1-Ser 214) was fused with the Fc region of human IgG1 at the C-terminus.

Organism

Mouse

Expression Host

Human Cells

QC Testing

Purity

> 85 % as determined by SDS-PAGE

Endotoxin

< 1.0 EU per µg of the protein as determined by the LAL method

Stability

Samples are stable for up to twelve months from date of receipt at -70°C

Predicted N terminal

Leu 18

Molecular Mass

The secreted recombinant mouse PROCR/Fc is a disulfide-linked homodimer. The reduced monomer comprises 438 amino acids and has a calculated molecular mass of 49.3 kDa. As a result of glycosylation, the apparent molecular mass of the recombinant protein is approximately 65-75 kDa in SDS-PAGE under reducing conditions.

Formulation

Lyophilized from sterile PBS, pH 7.4

1. 5 % trehalose and mannitol are added as protectants before lyophilization.

2. Please contact us for any concerns or special requirements.

Usage Guide

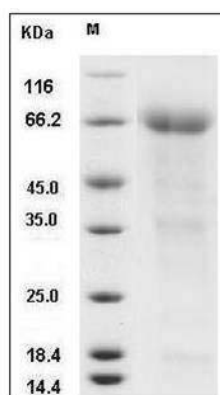
Storage

Store it under sterile conditions at -20°C to -80°C. It is recommended that the protein be aliquoted for optimal storage. Avoid repeated freeze-thaw cycles.

Reconstitution

Adding sterile water, prepare a stock solution of 0.25 mg/ml. Concentration is measured by UV-Vis.

SDS-PAGE



Mouse Epcr / PROCR Protein (Fc Tag) SDS-PAGE