

Human DDR1/MCK10/CD167 (aa 444-913, His & GST Tag) recombinant protein



Catalog Number: 503189

General Information

Gene Name Synonym

CD167 antigen-like family member A; Cell adhesion kinase; Discoidin receptor tyrosine kinase; HGK2; Mammary carcinoma kinase 10; Protein-tyrosine kinase 3A; Protein-tyrosine kinase RTK-6; TRK E; Tyrosine kinase DDR; Tyrosine-protein kinase CAK

Protein Construction

A DNA sequence encoding the human DDR1 (Q08345-1) (Arg444-Val913) was fused with the N-terminal polyhistidine-tagged GST tag at the N-terminus.

Organism

Human

Expression Host

Baculovirus-Insect Cells

QC Testing

Activity

The specific activity was determined to be 2.75 nmol/min/mg using synthetic AXLtide peptide(CKKSRGDYMTMQIG) as substrate.

Purity

> 89 % as determined by SDS-PAGE

Endotoxin

< 1.0 EU per µg of the protein as determined by the LAL method

Stability

Samples are stable for up to twelve months from date of receipt at -70°C

Predicted N terminal

Met

Molecular Mass

The recombinant human DDR1 /GST chimera consists of 707 amino acids and has a calculated molecular mass of 80 kDa. The recombinant protein migrates as an approximately 80 kDa band in SDS-PAGE under reducing conditions.

Formulation

Supplied as sterile 20mM Tris, 500mM NaCl, pH 7.4, 10% glycerol, 3mM DTT

1. 5 % trehalose and mannitol are added as protectants before lyophilization.

2. Please contact us for any concerns or special requirements.

Usage Guide

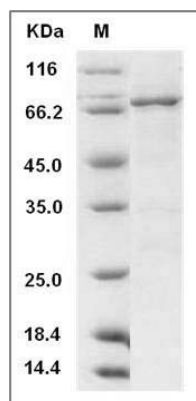
Storage

Store it under sterile conditions at -20°C to -80°C. It is recommended that the protein be aliquoted for optimal storage. Avoid repeated freeze-thaw cycles.

Reconstitution

Adding sterile water, prepare a stock solution of 0.25 mg/ml. Concentration is measured by UV-Vis.

SDS-PAGE



Human DDR1 Kinase / MCK10 / CD167 Protein (aa 444-913, His & GST Tag) SDS-PAGE