

Human SLPI (His Tag) recombinant protein



Catalog Number: 503186

General Information

Gene Name Synonym

BLPI; HUSI-1; Mucus proteinase inhibitor; Protease inhibitor WAP4; Secretory leukocyte protease inhibitor; Seminal proteinase inhibitor; WAP four-disulfide core domain protein 4

Protein Construction

A DNA sequence encoding the human SLPI (P03973)(Met1-Ala132) was expressed, with a C-terminal polyhistidine tag.

Organism

Human

Expression Host

Baculovirus-Insect Cells

QC Testing

Activity

Measured by its ability to inhibit trypsin cleavage of a fluorogenic peptide substrate, Mca-RPKPVE-Nval-WRK (Dnp)-NH₂ (Catalog # ES002). The IC₅₀ value is <1 Nm.

Purity

> 90 % as determined by SDS-PAGE

Endotoxin

< 1.0 EU per µg of the protein as determined by the LAL method

Stability

Samples are stable for up to twelve months from date of receipt at -70°C

Predicted N terminal

Ser 26

Molecular Mass

The secreted recombinant human SLPI consists of 117 amino acids and predicts a molecular mass of 13.1 KDa. The apparent molecular mass of the protein is approximately 15 KDa in SDS-PAGE under reducing conditions due to glycosylation.

Formulation

Lyophilized from sterile 20mM Tris, 500mM NaCl, 10% gly, pH 7.4.

1. 5 % trehalose and mannitol are added as protectants before lyophilization.

2. Please contact us for any concerns or special requirements.

Usage Guide

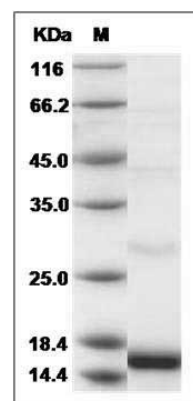
Storage

Store it under sterile conditions at -20°C to -80°C. It is recommended that the protein be aliquoted for optimal storage. Avoid repeated freeze-thaw cycles.

Reconstitution

Adding sterile water, prepare a stock solution of 0.25 mg/ml. Concentration is measured by UV-Vis.

SDS-PAGE



Human SLPI Protein (His Tag) SDS-PAGE