

Human CART / CARTPT (Fc Tag) recombinant protein



Catalog Number: 503167

General Information

Gene Name Synonym

CART(1-39); CART(42-89)

Protein Construction

A DNA sequence encoding the human CARTPT (NP_004282.1) (Met1-Leu116) was expressed with the Fc region of mouse IgG1 at the C-terminus.

Organism

Human

Expression Host

Human Cells

QC Testing

Purity

> 95 % as determined by SDS-PAGE

Endotoxin

< 1.0 EU per µg of the protein as determined by the LAL method

Stability

Samples are stable for up to twelve months from date of receipt at -70°C

Predicted N terminal

Gln 28

Molecular Mass

The recombinant human CARTPT/mFc comprises

323 amino acids and has a predicted molecular mass of 36.3 kDa. The apparent molecular mass of the monomer is approximately 37 kDa in SDS-PAGE under reducing conditions.

Formulation

Lyophilized from sterile PBS, pH 7.4.

1. 5 % trehalose and mannitol are added as protectants before lyophilization.

2. Please contact us for any concerns or special requirements.

Usage Guide

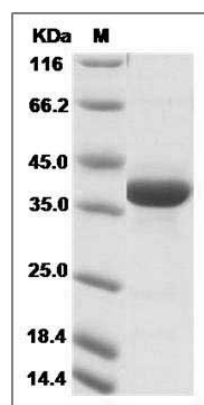
Storage

Store it under sterile conditions at -20°C to -80°C. It is recommended that the protein be aliquoted for optimal storage. Avoid repeated freeze-thaw cycles.

Reconstitution

Adding sterile water, prepare a stock solution of 0.25 mg/ml. Concentration is measured by UV-Vis.

SDS-PAGE



Human CART / CARTPT Protein (Fc Tag) SDS-PAGE