

Canine Fractalkine/CX3CL1 (His Tag) recombinant protein



Catalog Number: 503115

General Information

Gene Name Synonym:

Protein Construction:

A DNA sequence encoding the canine CX3CL1 (NP_001271385.1) (Met1-Gly100) was expressed with a polyhistidine tag at the C-terminus.

Source: Canine

Expression Host: Human Cells

QC Testing

Activity:

Purity:

> 95 % as determined by SDS-PAGE.

Endotoxin:

< 1.0 EU per μg protein as determined by the LAL method.

Stability:

Samples are stable for up to twelve months from date of receipt at -70°C

Predicted N terminal:

Gln 25

Molecular Mass:

The recombinant canine CX3CL1 consists of 366

amino acids and predicts a molecular mass of 38.9 kDa.

Formulation:

Lyophilized from sterile PBS, pH 7.4.

1. 5 % trehalose and mannitol are added as protectants before lyophilization.

2. Please contact us for any concerns or special requirements.

Usage Guide

Storage:

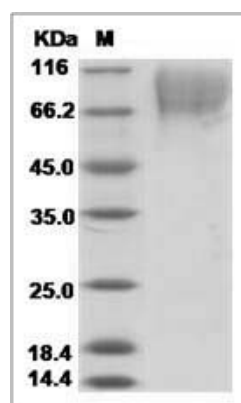
Store it under sterile conditions at -20°C to -80°C .

It is recommended that the protein be aliquoted for optimal storage. Avoid repeated freeze-thaw cycles.

Reconstitution:

Adding sterile water, prepare a stock solution of 0.25 mg/ml. Concentration is measured by UV-Vis.

SDS-PAGE:



Canine Fractalkine / CX3CL1 Protein (His Tag)