

General Information

Gene Name Synonym

Aldehyde dehydrogenase family 7 member A1;
Antiquitin-1; Betaine aldehyde dehydrogenase;
Delta1-piperidine-6-carboxylate dehydrogenase

Protein Construction

A DNA sequence encoding the human ALDH7A1 isoform 2 (P49419-2) (Ser 2-Gln 511) was expressed, with a polyhistidine tag at the N-terminus.

Organism

Human

Expression Host

E. coli

QC Testing

Purity

> 93 % as determined by SDS-PAGE

Endotoxin

Please contact us for more information.

Stability

Samples are stable for up to twelve months from date of receipt at -70°C

Predicted N terminal

Met

Molecular Mass

The recombinant human ALDH7A1 consisting of 517 amino acids and migrates as an approximately 56 kDa band in SDS-PAGE under reducing conditions as predicted.

Formulation

Lyophilized from sterile 50mM Tris, 500mM NaCl, 20% glycerol, pH 8.0

1. 5 % trehalose and mannitol are added as protectants before lyophilization.
2. Please contact us for any concerns or special requirements.

Usage Guide

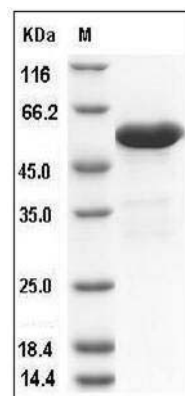
Storage

Store it under sterile conditions at -20°C to -80°C. It is recommended that the protein be aliquoted for optimal storage. Avoid repeated freeze-thaw cycles.

Reconstitution

Adding sterile water, prepare a stock solution of 0.25 mg/ml. Concentration is measured by UV-Vis.

SDS-PAGE



Human ALDH7A1 / ATQ1 Protein (His Tag) SDS-PAGE