

Canine Fractalkine/CX3CL1 recombinant protein



Catalog Number: 503087

General Information

Gene Name Synonym:

Protein Construction:

A DNA sequence encoding the canine CX3CL1 (H1ADY9) (Met1-Arg379) was expressed with six amino acids (LEVLFQ) at the C-terminus.

Source: Canine

Expression Host: Human Cells

QC Testing

Activity:

Purity:

> 95 % as determined by SDS-PAGE

Endotoxin:

< 1.0 EU per μg of the protein as determined by the LAL method

Stability:

Samples are stable for up to twelve months from date of receipt at -70°C

Predicted N terminal:

Gln 25

Molecular Mass:

The recombinant canine CX3CL1 is a disulfide-linked homodimer. The reduced monomer comprises 362 amino acids and has a predicted

molecular mass of 38.2 kDa. The apparent molecular mass of the protein is approximately 64-69 kDa in SDS-PAGE under reducing conditions.

Formulation:

Lyophilized from sterile PBS, pH 7.4.

1. 5 % trehalose and mannitol are added as protectants before lyophilization.

2. Please contact us for any concerns or special requirements.

Usage Guide

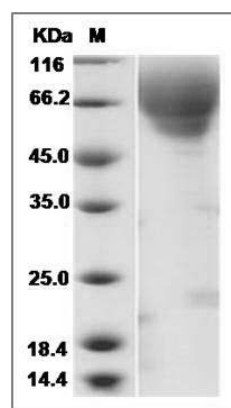
Storage:

Store it under sterile conditions at -20°C to -80°C . It is recommended that the protein be aliquoted for optimal storage. Avoid repeated freeze-thaw cycles.

Reconstitution:

Adding sterile water, prepare a stock solution of 0.25 mg/ml. Concentration is measured by UV-Vis.

SDS-PAGE:



Canine Fractalkine / CX3CL1 Protein SDS-PAGE