

# Human ALDH1A1 / ALDH1 (His Tag) recombinant protein



Catalog Number: 503068

## General Information

### Gene Name Synonym

ALDH-E1; ALHDII; Aldehyde dehydrogenase family 1 member A1; Aldehyde dehydrogenase, cytosolic

### Protein Construction

A DNA sequence encoding the human ALDH1A1 (NP\_000680.2) (Ser 2-Ser 501) was expressed, with a polyhistidine tag at the N-terminus.

### Organism

Human

### Expression Host

E. coli

## QC Testing

### Purity

> 98 % as determined by SDS-PAGE

### Endotoxin

Please contact us for more information.

### Stability

Samples are stable for up to twelve months from date of receipt at -70°C

### Predicted N terminal

Met

### Molecular Mass

The recombinant human ALDH1A1 comprises 507 amino acids and has a predicted molecular mass of 41.5 kDa. It migrates as an approximately 45-50 kDa band in SDS-PAGE under reducing conditions.

### Formulation

Lyophilized from sterile 20mM Tris, 500mM NaCl, 20% glycerol, 1mM DTT, pH 8.0

1. 5 % trehalose and mannitol are added as protectants before lyophilization.
2. Please contact us for any concerns or special requirements.

## Usage Guide

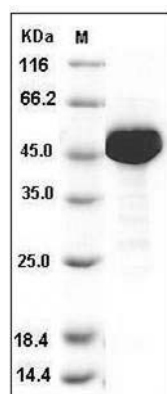
### Storage

Store it under sterile conditions at -20°C to -80°C. It is recommended that the protein be aliquoted for optimal storage. Avoid repeated freeze-thaw cycles.

### Reconstitution

Adding sterile water, prepare a stock solution of 0.25 mg/ml. Concentration is measured by UV-Vis.

### SDS-PAGE



Human ALDH1 / ALDH1A1 / ALDC Protein (His Tag) SDS-PAGE