

General Information

Gene Name Synonym

Phosphatidylethanolamine binding protein 1, isoform CRA_a; Phosphatidylethanolamine-binding protein 1

Protein Construction

A DNA sequence encoding the human PEBP1 (NP_002558.1) (Met1-Lys187) was expressed.

Organism

Human

Expression Host

E. coli

QC Testing

Purity

> 95 % as determined by SDS-PAGE.

Endotoxin

Please contact us for more information.

Stability

Samples are stable for up to twelve months from date of receipt at -70°C

Predicted N terminal

Met

Molecular Mass

The recombinant human PEBP1 consists 187

amino acids and predicts a molecular mass of 21.1 kDa.

Formulation

Lyophilized from sterile 20 mM TRIS, 10 % glycerol, pH 8.0.

1. 5 % trehalose and mannitol are added as protectants before lyophilization.

2. Please contact us for any concerns or special requirements.

Usage Guide

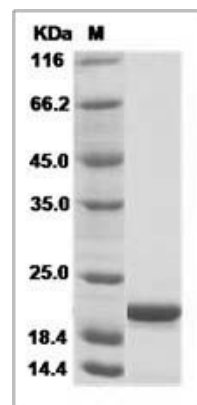
Storage

Store it under sterile conditions at -20°C to -80°C. It is recommended that the protein be aliquoted for optimal storage. Avoid repeated freeze-thaw cycles.

Reconstitution

Adding sterile water, prepare a stock solution of 0.25 mg/ml. Concentration is measured by UV-Vis.

SDS-PAGE



Human PEBP1 / Phosphatidylethanolamine binding protein 1 Protein SDS-PAGE