

Human METTL11A recombinant protein



Catalog Number: 503021

General Information

Protein Construction

A DNA sequence encoding the human METTL11A (NP_054783.2) (Thr 2-Arg 223) was expressed and purified, with additional two amino acids (Gly & Pro) at the N-terminus.

Organism

Human

Expression Host

E. coli

QC Testing

Purity

> 95 % as determined by SDS-PAGE

Endotoxin

Please contact us for more information.

Stability

Samples are stable for up to twelve months from date of receipt at -70°C

Predicted N terminal

Gly

Molecular Mass

The recombinant human METTL11A consists of 224 amino acids and has a predicted molecular mass of 25.5 kDa as estimated by SDS-PAGE

under reducing conditions.

Formulation

Lyophilized from sterile 20mM Tris, 150mM NaCl, 10% glycerol, pH 7.5

1. 5 % trehalose and mannitol are added as protectants before lyophilization.

2. Please contact us for any concerns or special requirements.

Usage Guide

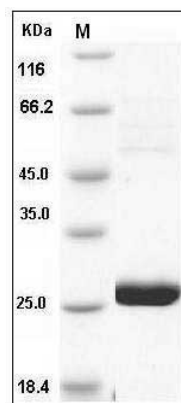
Storage

Store it under sterile conditions at -20°C to -80°C. It is recommended that the protein be aliquoted for optimal storage. Avoid repeated freeze-thaw cycles.

Reconstitution

Adding sterile water, prepare a stock solution of 0.25 mg/ml. Concentration is measured by UV-Vis.

SDS-PAGE



Human METTL11A Protein SDS-PAGE