

Human C6 (His Tag) recombinant protein



Catalog Number: 503010

General Information

Protein Construction

A DNA sequence encoding the human C6 (AAA59668.1) (Met 1-Ala 934) was fused with a polyhistidine tag at the C-terminus.

Organism

Human

Expression Host

Human Cells

QC Testing

Purity

> 90 % as determined by SDS-PAGE

Endotoxin

< 1.0 EU per μg of the protein as determined by the LAL method

Stability

Samples are stable for up to twelve months from date of receipt at -70°C

Predicted N terminal

Cys 22

Molecular Mass

The secreted recombinant human C6 comprises 924 amino acids and has a predicted molecular mass of 104 kDa. The apparent molecular mass of

rh C6 is approximately 110 kDa in SDS-PAGE under reducing conditions.

Formulation

Lyophilized from sterile PBS, pH 7.4

1. 5 % trehalose and mannitol are added as protectants before lyophilization.

2. Please contact us for any concerns or special requirements.

Usage Guide

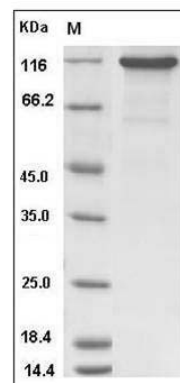
Storage

Store it under sterile conditions at -20°C to -80°C . It is recommended that the protein be aliquoted for optimal storage. Avoid repeated freeze-thaw cycles.

Reconstitution

Adding sterile water, prepare a stock solution of 0.25 mg/ml. Concentration is measured by UV-Vis.

SDS-PAGE



Human C6 / complement component 6 Protein (His Tag) SDS-PAGE