

General Information

Gene Name Synonym

Endogenous retrovirus group K member 113 Env polyprotein; Endogenous retrovirus group K member 13-1 Env polyprotein; Endogenous retrovirus group K member 18 Env polyprotein; Endogenous retrovirus group K member 19 Env polyprotein; Endogenous retrovirus group K member 24 Env polyprotein; Endogenous retrovirus group K member 25 Env polyprotein; Endogenous retrovirus group K member 6 Env polyprotein; Endogenous retrovirus group K member 7 Env polyprotein; Endogenous retrovirus group K member 8 Env polyprotein; Endogenous retrovirus group K member 9 Env polyprotein; Envelope glycoprotein gp160

Protein Construction

A DNA sequence encoding the HIV1(group M, subtype B, isolate BAL) Envelope glycoprotein gp160 Protein(gp120 subunit) (AAA44191.1) (Glu30-Arg509) was expressed with a polyhistidine tag at the C-terminus.

Organism

HIV

Expression Host

Human Cells

QC Testing

Purity

> (85.5+6.2) % as determined by SDS-PAGE.

Endotoxin

<1.0 EU per μg protein as determined by the LAL method.

Stability

Samples are stable for up to twelve months from

date of receipt at -70°C

Predicted N terminal

Glu 30

Molecular Mass

The recombinant HIV1(group M, subtype B, isolate BAL) Envelope glycoprotein gp160 Protein(gp120 subunit) consists 491 amino acids and predicts a molecular mass of 55.4 kDa.

Formulation

Lyophilized from sterile PBS, pH 7.4.

1. 5 % trehalose and mannitol are added as protectants before lyophilization.

2. Please contact us for any concerns or special requirements.

Usage Guide

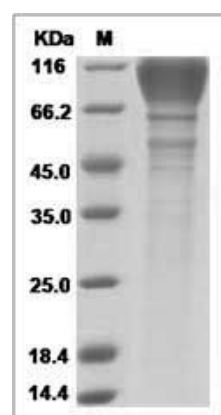
Storage

Store it under sterile conditions at -20°C to -80°C . It is recommended that the protein be aliquoted for optimal storage. Avoid repeated freeze-thaw cycles.

Reconstitution

Adding sterile water, prepare a stock solution of 0.25 mg/ml. Concentration is measured by UV-Vis.

SDS-PAGE



HIV HIV gp120 (His Tag) recombinant protein



Catalog Number: 502992

HIV-1 (group M, subtype B, isolate BAL) gp120

Protein (His Tag)