

# Rhesus CD36/SCARB3 (Fc Tag) recombinant protein



Catalog Number: 502981

## General Information

### Protein Construction

A DNA sequence encoding the rhesus CD36 (NP\_001028085.1) (Gly30-Asn439) was expressed with the Fc region of human IgG1 at the C-terminus.

### Organism

Rhesus

### Expression Host

Human Cells

## QC Testing

### Purity

> 70 % as determined by SDS-PAGE

### Endotoxin

< 1.0 EU per  $\mu$ g of the protein as determined by the LAL method

### Stability

Samples are stable for up to twelve months from date of receipt at -70°C

### Predicted N terminal

Gly 30

### Molecular Mass

The recombinant rhesus CD36 comprises 651 amino acids and has a calculated molecular mass

of 73.6 KDa.

### Formulation

Lyophilized from sterile PBS, pH 7.4.

1. 5 % trehalose and mannitol are added as protectants before lyophilization.

2. Please contact us for any concerns or special requirements.

## Usage Guide

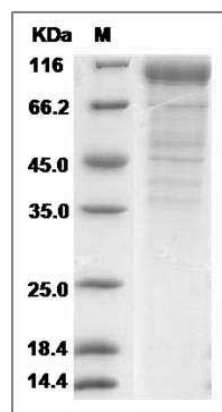
### Storage

Store it under sterile conditions at -20°C to -80°C. It is recommended that the protein be aliquoted for optimal storage. Avoid repeated freeze-thaw cycles.

### Reconstitution

Adding sterile water, prepare a stock solution of 0.25 mg/ml. Concentration is measured by UV-Vis.

### SDS-PAGE



Cynomolgus CD36 / SCARB3 Protein (Fc Tag)  
SDS-PAGE