

# Rabbit IL-1 beta recombinant protein



Catalog Number: 502976

## General Information

### Gene Name Synonym

Lymphocyte proliferation-potentiating factor

### Protein Construction

A DNA sequence encoding the rabbit IL1B (NP\_001075670.1) (Ala117-Ser268) was expressed with with an initial Met at the N-terminus.

### Organism

Rabbit

### Expression Host

E. coli

## QC Testing

### Activity

Measured in a cell proliferation assay using D10.G4.1 mouse helper T cells. Symons,J.A. et al. (1987) in Lymphokines and Interferons, a Practical Approach. Clemens,M.J. et al. (eds): IRL Press. 272.

The ED<sub>50</sub> for this effect is typically 1-5 pg/mL.

### Purity

> 90 % as determined by SDS-PAGE

### Endotoxin

Please contact us for more information.

### Stability

Samples are stable for up to twelve months from date of receipt at -70°C

### Predicted N terminal

Met

### Molecular Mass

The recombinant rabbit IL1B consists of 153 amino acids and predicts a molecular mass of 17.5 KDa. It migrates as an approximately 19 KDa band in SDS-PAGE under reducing conditions.

### Formulation

Lyophilized from sterile PBS, pH 7.4.

1. 5 % trehalose and mannitol are added as protectants before lyophilization.

2. Please contact us for any concerns or special requirements.

## Usage Guide

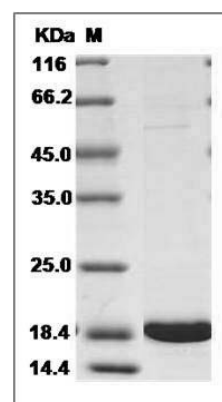
### Storage

Store it under sterile conditions at -20°C to -80°C. It is recommended that the protein be aliquoted for optimal storage. Avoid repeated freeze-thaw cycles.

### Reconstitution

Adding sterile water, prepare a stock solution of 0.25 mg/ml. Concentration is measured by UV-Vis.

### SDS-PAGE



Rabbit IL-1 beta / IL1B Protein SDS-PAGE