

General Information

Gene Name Synonym

Biliverdin reductase B; Biliverdin-IX beta-reductase; Green heme-binding protein; NADPH-dependent diaphorase; NADPH-flavin reductase

Protein Construction

A DNA sequence encoding the human BLVRB (P30043) (Ala 2-Gln 206) was expressed, with a polyhistidine tag at the N-terminus.

Organism

Human

Expression Host

E. coli

QC Testing

Purity

> 97 % as determined by SDS-PAGE

Endotoxin

Please contact us for more information.

Stability

Samples are stable for up to twelve months from date of receipt at -70°C

Predicted N terminal

Met

Molecular Mass

The recombinant human BLVRB consisting of 216 amino acids and has a calculated molecular mass of 23.5 kDa. It migrates as a kDa band in SDS-PAGE under reducing conditions as predicted.

Formulation

Lyophilized from sterile PBS, 0.02% Brij35, 10% glycerol, pH 7.5

1. 5 % trehalose and mannitol are added as protectants before lyophilization.
2. Please contact us for any concerns or special requirements.

Usage Guide

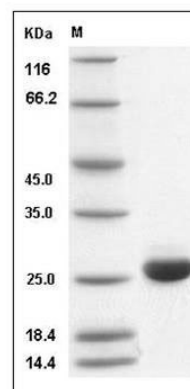
Storage

Store it under sterile conditions at -20°C to -80°C. It is recommended that the protein be aliquoted for optimal storage. Avoid repeated freeze-thaw cycles.

Reconstitution

Adding sterile water, prepare a stock solution of 0.25 mg/ml. Concentration is measured by UV-Vis.

SDS-PAGE



Human BLVRB / biliverdin reductase B Protein (His Tag) SDS-PAGE