

Human 14-3-3 sigma/Stratifin/YWHAS recombinant protein



Catalog Number: 502970

General Information

Gene Name Synonym

Epithelial cell marker protein 1; Stratifin

Protein Construction

A DNA sequence encoding the human SFN (NP_006133.1) (Met 1-Ser 248) was expressed, with two additional amino acids (Gly & Pro) at the N-terminus.

Organism

Human

Expression Host

E. coli

QC Testing

Purity

> 97 % as determined by SDS-PAGE

Endotoxin

Please contact us for more information.

Stability

Samples are stable for up to twelve months from date of receipt at -70°C

Predicted N terminal

Gly

Molecular Mass

The recombinant human SFN consists of 250

amino acids and has a predicted molecular mass of 28 kDa as estimated in SDS-PAGE under reducing conditions.

Formulation

Lyophilized from sterile 20mM Tris, 150mM NaCl, 10mM GSH, 25% glycerol, pH 8.0

1. 5 % trehalose and mannitol are added as protectants before lyophilization.

2. Please contact us for any concerns or special requirements.

Usage Guide

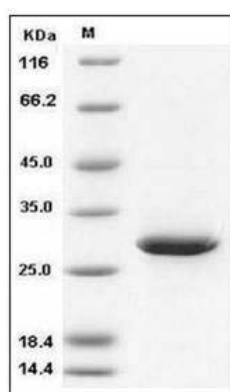
Storage

Store it under sterile conditions at -20°C to -80°C. It is recommended that the protein be aliquoted for optimal storage. Avoid repeated freeze-thaw cycles.

Reconstitution

Adding sterile water, prepare a stock solution of 0.25 mg/ml. Concentration is measured by UV-Vis.

SDS-PAGE



Human 14-3-3 sigma / Stratifin / YWHAS Protein
SDS-PAGE