

# Human MAP4K2/GC Kinase (His & GST Tag) recombinant protein



Catalog Number: 502950

## General Information

### Gene Name Synonym:

B lymphocyte serine/threonine-protein kinase;  
Germinal center kinase; MAPK/ERK kinase kinase  
kinase 2; Rab8-interacting protein

### Protein Construction:

A DNA sequence encoding the human MAP4K2  
(AAH47865.1) (Met 1-Tyr 812) was fused with the  
N-terminal polyhistidine-tagged GST tag at the N-  
terminus.

**Source:** Human

**Expression Host:** Baculovirus-Insect Cells

## QC Testing

### Activity:

Kinase activity untested

### Purity:

> 87 % as determined by SDS-PAGE

### Endotoxin:

< 1.0 EU per  $\mu\text{g}$  of the protein as determined by  
the LAL method

### Stability:

Samples are stable for up to twelve months from  
date of receipt at  $-70^{\circ}\text{C}$

### Predicted N terminal:

Met

### Molecular Mass:

The recombinant human MAP4K2/GST chimera

consists of 1049 amino acids and has a calculated  
molecular mass of 119 kDa. It migrates as an  
approximately 116 kDa band in SDS-PAGE under  
reducing conditions.

### Formulation:

Supplied as sterile 50mM Tris, 100mM NaCl, pH  
8.0

1. 5 % trehalose and mannitol are added as  
protectants before lyophilization.
2. Please contact us for any concerns or special  
requirements.

## Usage Guide

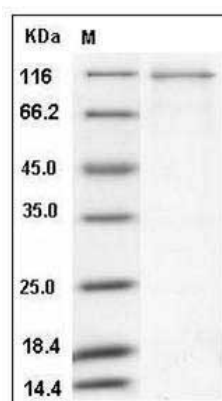
### Storage:

Store it under sterile conditions at  $-20^{\circ}\text{C}$  to  $-80^{\circ}\text{C}$ .  
It is recommended that the protein be aliquoted  
for optimal storage. Avoid repeated freeze-thaw  
cycles.

### Reconstitution:

Adding sterile water, prepare a stock solution of  
0.25 mg/ml. Concentration is measured by UV-Vis.

### SDS-PAGE:



Human MAP4K2 / GC Kinase Protein (His & GST  
Tag) SDS-PAGE