

E. coli stx2B / Shiga toxin II subunit B (His Tag) recombinant protein



Catalog Number: 502936

General Information

Gene Name Synonym

Shiga toxin 2B; Shiga toxin 2B-subunit; Shiga toxin 2d subunit B; Stx2 holotoxin B subunit; Stx2-NV206 toxin B subunit; Variant Shiga toxin type 2 B subunit; Verocytotoxin 2 variant B subunit

Protein Construction

A DNA sequence encoding the E.Coli STX2B (Q93EY4) (Met 1-Asp 89) was expressed, with a polyhistidine tag at the N-terminus.

Organism

E. coli

Expression Host

E. coli

QC Testing

Purity

> 98 % as determined by SDS-PAGE

Endotoxin

Please contact us for more information.

Stability

Samples are stable for up to twelve months from date of receipt at -70°C

Predicted N terminal

Met

Molecular Mass

The recombinant E.Coli STX2B consisting of 95 amino acids and has a calculated molecular mass of 10.6 kDa. It migrates as an approximately 16 kDa band in SDS-PAGE under reducing conditions.

Formulation

Lyophilized from sterile PBS, pH 7.4

1. 5 % trehalose and mannitol are added as protectants before lyophilization.

2. Please contact us for any concerns or special requirements.

Usage Guide

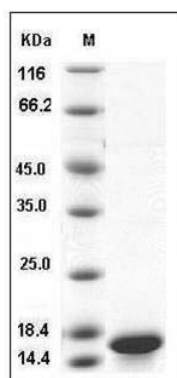
Storage

Store it under sterile conditions at -20°C to -80°C. It is recommended that the protein be aliquoted for optimal storage. Avoid repeated freeze-thaw cycles.

Reconstitution

Adding sterile water, prepare a stock solution of 0.25 mg/ml. Concentration is measured by UV-Vis.

SDS-PAGE



Enterohemorrhagic E. coli (EHEC) STX2B /
Syntaxis 2 Protein (His Tag) SDS-PAGE