

# Mouse EphA7/Eph Receptor A7 (His Tag) recombinant protein



Catalog Number: 502928

## General Information

### Gene Name Synonym

Developmental kinase 1; EPH homology kinase 3;  
Embryonic brain kinase

### Protein Construction

A DNA sequence encoding the mouse EPHA7 isoform 1 (Q61772-1) extracellular domain (Met 1-Ile 556) was fused with a polyhistidine tag at the C-terminus.

### Organism

Mouse

### Expression Host

Human Cells

## QC Testing

### Activity

Measured by its binding ability in a functional ELISA. Immobilized mouse EphA7 at 2 µg/ml (100 µl/well) can bind mouse EphrinA4 with a linear range of 0.08-10 ng/ml.

### Purity

> 97 % as determined by SDS-PAGE

### Endotoxin

< 1.0 EU per µg of the protein as determined by the LAL method

### Stability

Samples are stable for up to twelve months from date of receipt at -70°C

### Predicted N terminal

Lys 30

## Molecular Mass

The secreted recombinant mouse EPHA7 consists of 537 amino acids and has a predicted molecular mass of 60.4 kDa. In SDS-PAGE under reducing conditions, the apparent molecular mass of rmEPHA7 is approximately 70 kDa due to glycosylation.

## Formulation

Lyophilized from sterile PBS, pH 7.4

1. 5 % trehalose and mannitol are added as protectants before lyophilization.

2. Please contact us for any concerns or special requirements.

## Usage Guide

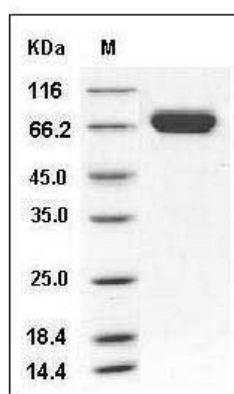
### Storage

Store it under sterile conditions at -20°C to -80°C. It is recommended that the protein be aliquoted for optimal storage. Avoid repeated freeze-thaw cycles.

### Reconstitution

Adding sterile water, prepare a stock solution of 0.25 mg/ml. Concentration is measured by UV-Vis.

## SDS-PAGE



Mouse EphA7 / EHK-3 Protein (His Tag) SDS-PAGE