

# Mouse BACE2 / Beta secretase 2 (His Tag) recombinant protein



Catalog Number: 502925

## General Information

### Gene Name Synonym

Aspartyl protease 1; Beta-site amyloid precursor protein cleaving enzyme 2; Memapsin-1; Membrane-associated aspartic protease 1; Theta-secretase

### Protein Construction

A DNA sequence encoding the mouse BACE2 (Q9JL18) (Met1-Pro462) was expressed with a C-terminal polyhistidine tag.

### Organism

Mouse

### Expression Host

Human Cells

## QC Testing

### Activity

Measured by its ability to cleave a fluorogenic peptide substrate Mca-KPLGL-Dpa-AR-NH<sub>2</sub> (Catalog # ES010).  
The specific activity is >50 pmoles/min/μg.

### Purity

> 95 % as determined by SDS-PAGE

### Endotoxin

< 1.0 EU per μg of the protein as determined by the LAL method

### Stability

Samples are stable for up to twelve months from date of receipt at -70°C

### Predicted N terminal

Ala 20

### Molecular Mass

The recombinant mouse BACE2 comprises 454 amino acids and has a predicted molecular mass of 49.2 kDa. The apparent molecular mass of the protein is approximately 55 kDa in SDS-PAGE under reducing conditions due to glycosylation.

### Formulation

Lyophilized from sterile PBS, pH 7.4  
1. 5 % trehalose and mannitol are added as protectants before lyophilization.  
2. Please contact us for any concerns or special requirements.

## Usage Guide

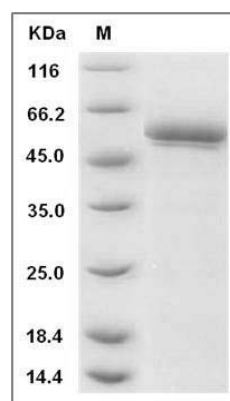
### Storage

Store it under sterile conditions at -20°C to -80°C. It is recommended that the protein be aliquoted for optimal storage. Avoid repeated freeze-thaw cycles.

### Reconstitution

Adding sterile water, prepare a stock solution of 0.25 mg/ml. Concentration is measured by UV-Vis.

### SDS-PAGE



Mouse BACE2 / Beta secretase 2 Protein (His Tag)  
SDS-PAGE