

General Information

Gene Name Synonym

EST-1; Sulfotransferase 1E1; Sulfotransferase, estrogen-preferring

Protein Construction

A DNA sequence encoding the human SULT1E1 (NP_005411.1) (Asn 2-Ile 294) was expressed, with a polyhistidine tag at the N-terminus.

Organism

Human

Expression Host

E. coli

QC Testing

Purity

> 92 % as determined by SDS-PAGE

Endotoxin

Please contact us for more information.

Stability

Samples are stable for up to twelve months from date of receipt at -70°C

Predicted N terminal

Met

Molecular Mass

The recombinant human SULT1E1 comprises 300

amino acids and has a predicted molecular mass of 36 kDa. It migrates as an approximately 33 kDa band in SDS-PAGE under reducing conditions.

Formulation

Lyophilized from sterile 20mM Tris 0.5M NaCl, 20% glycerol, pH 8.0

1. 5 % trehalose and mannitol are added as protectants before lyophilization.

2. Please contact us for any concerns or special requirements.

Usage Guide

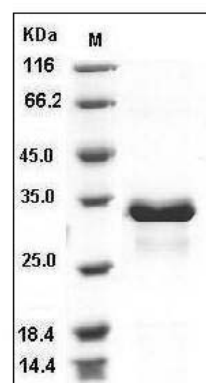
Storage

Store it under sterile conditions at -20°C to -80°C. It is recommended that the protein be aliquoted for optimal storage. Avoid repeated freeze-thaw cycles.

Reconstitution

Adding sterile water, prepare a stock solution of 0.25 mg/ml. Concentration is measured by UV-Vis.

SDS-PAGE



Human SULT1E1 / ST1E1 Protein (His Tag) SDS-PAGE