

## General Information

### Gene Name Synonym

Apolipoprotein J; Clustrin; Sulfated glycoprotein 2; Clusterin beta chain; Clusterin alpha chain

### Protein Construction

A DNA sequence encoding the mouse CLU (NP\_038520.2) (Met 1-Glu 448) was expressed, with a C-terminal polyhistidine tag.

### Organism

Mouse

### Expression Host

Human Cells

## QC Testing

### Purity

> 96 % as determined by SDS-PAGE

### Endotoxin

< 1.0 EU per  $\mu$ g of the protein as determined by the LAL method

### Stability

Samples are stable for up to twelve months from date of receipt at -70°C

### Predicted N terminal

Glu 22 ( $\beta$  chain) & Ser 227( $\alpha$  chain)

### Molecular Mass

The full length of recombinant mouse CLU comprises 438 amino acids and has a calculated

molecular mass of 50.8 kDa. The apparent molecular mass of the recombinant protein is approximately 32, 42 and 65 kDa in SDS-PAGE under reducing conditions, corresponding to the cleaved  $\beta$  chain,  $\alpha$  chain and the full length respectively.

### Formulation

Lyophilized from sterile PBS, pH 7.4

1. 5 % trehalose and mannitol are added as protectants before lyophilization.

2. Please contact us for any concerns or special requirements.

## Usage Guide

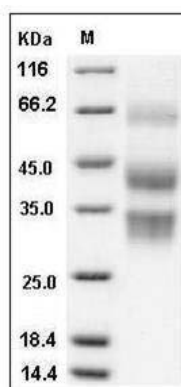
### Storage

Store it under sterile conditions at -20°C to -80°C. It is recommended that the protein be aliquoted for optimal storage. Avoid repeated freeze-thaw cycles.

### Reconstitution

Adding sterile water, prepare a stock solution of 0.25 mg/ml. Concentration is measured by UV-Vis.

### SDS-PAGE



Mouse Clusterin / Apolipoprotein J / Apo-J / CLU Protein (His Tag) SDS-PAGE