

Human EPHX2 (His Tag) recombinant protein



Catalog Number: 502805

General Information

Gene Name Synonym

Cytosolic epoxide hydrolase 2; Epoxide hydratase; Soluble epoxide hydrolase; Lipid-phosphate phosphatase

Protein Construction

A DNA sequence encoding the human EPHX2 (NP_001970.2) (Met1-Met555) was expressed with a polyhistidine tag at the N-terminus.

Organism

Human

Expression Host

Baculovirus-Insect Cells

QC Testing

Purity

> 90 % as determined by SDS-PAGE.

Endotoxin

< 1.0 EU per μg protein as determined by the LAL method.

Stability

Samples are stable for up to twelve months from date of receipt at -70°C

Predicted N terminal

His

Molecular Mass

The recombinant human EPHX2 consists 574 amino acids and predicts a molecular mass of 65 kDa.

Formulation

Lyophilized from sterile 20 mM Tris, 500 mM NaCl, 10 % glycerol, pH 7.4.

- 5 % trehalose and mannitol are added as protectants before lyophilization.
- Please contact us for any concerns or special requirements.

Usage Guide

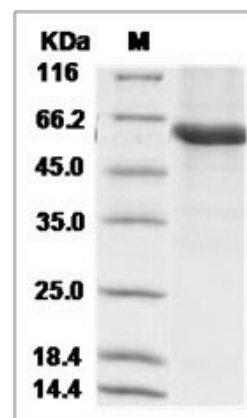
Storage

Store it under sterile conditions at -20°C to -80°C . It is recommended that the protein be aliquoted for optimal storage. Avoid repeated freeze-thaw cycles.

Reconstitution

Adding sterile water, prepare a stock solution of 0.25 mg/ml. Concentration is measured by UV-Vis.

SDS-PAGE



Human EPHX2 / SHE Protein (His Tag)