

## General Information

### Gene Name Synonym

Protein ST2

### Protein Construction

A DNA sequence encoding the human IL1RL1 isoform 2 (NP\_003847.2) (Met 1-Phe 328) was fused with the Fc region of human IgG1 at the C-terminus.

### Organism

Human

### Expression Host

Human Cells

## QC Testing

### Activity

Measured by its binding ability in a functional ELISA. Immobilized human IL-33 at 10 µg/ml (100 µl/well) can bind human IL1RL1 / Fc Chimera with a linear range of 0.31-5 ng/ml.

### Purity

> 95 % as determined by SDS-PAGE

### Endotoxin

< 1.0 EU per µg of the protein as determined by the LAL method

### Stability

Samples are stable for up to twelve months from date of receipt at -70°C

### Predicted N terminal

Lys 19

### Molecular Mass

The recombinant human IL1RL1/Fc is a disulfide-linked homodimeric protein. The reduced monomer consists of 548 amino acids and has a calculated molecular mass of 67.1 kDa. As a result of glycosylation, the apparent molecular mass of rh IL1RL1/Fc monomer is approximately 85-95 kDa in SDS-PAGE under reducing conditions.

### Formulation

Lyophilized from sterile PBS, pH 7.4

1. 5 % trehalose and mannitol are added as protectants before lyophilization.

2. Please contact us for any concerns or special requirements.

## Usage Guide

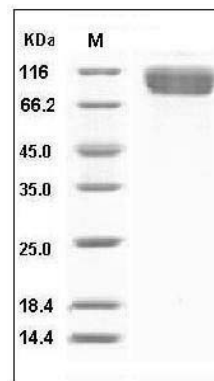
### Storage

Store it under sterile conditions at -20°C to -80°C. It is recommended that the protein be aliquoted for optimal storage. Avoid repeated freeze-thaw cycles.

### Reconstitution

Adding sterile water, prepare a stock solution of 0.25 mg/ml. Concentration is measured by UV-Vis.

### SDS-PAGE



Human IL1RL1 / DER4 Protein (Fc Tag) SDS-PAGE