

# Cynomolgus CTLA-4/CD152 (Fc Tag) recombinant protein



Catalog Number: 502754

## General Information

### Gene Name Synonym

Cytotoxic T-lymphocyte protein 4 isoform CTLA4-TM; Uncharacterized protein

### Protein Construction

A DNA sequence encoding the cynomolgus/rhesus CTLA4 (Q9BDC4) (Met1-Asp161) was expressed with the Fc region of human IgG1 at the C-terminus. Cynomolgus and Rhesus CTLA4 sequences are identical.

### Organism

Cynomolgus

### Expression Host

Human Cells

## QC Testing

### Activity

Measured by its binding ability in a functional ELISA.

Immobilized human B7-1-His (Cat:503898) at 10 µg/ml (100 µl/well) can bind Cynomolgus CTLA4-Fc (Cat:502754), The EC<sub>50</sub> of Cynomolgus CTLA4-Fc is 6.0-14.5 ng/ml.

### Purity

> 95 % as determined by SDS-PAGE

### Endotoxin

< 1.0 EU per µg of the protein as determined by the LAL method

### Stability

Samples are stable for up to twelve months from date of receipt at -70°C

### Predicted N terminal

Ala 37

### Molecular Mass

The recombinant cynomolgus/rhesus CTLA4 is a disulfide-linked homodimer. The reduced monomer comprises 366 amino acids and has a calculated molecular mass of 40.4 KDa. The apparent molecular mass of the protein is approximately 52 KDa respectively in SDS-PAGE.

### Formulation

Lyophilized from sterile PBS, pH 7.4

1. 5 % trehalose and mannitol are added as protectants before lyophilization.

2. Please contact us for any concerns or special requirements.

## Usage Guide

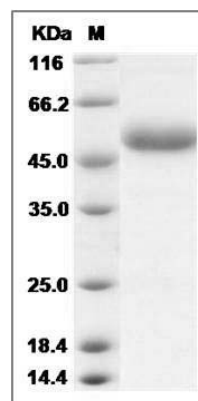
### Storage

Store it under sterile conditions at -20°C to -80°C. It is recommended that the protein be aliquoted for optimal storage. Avoid repeated freeze-thaw cycles.

### Reconstitution

Adding sterile water, prepare a stock solution of 0.25 mg/ml. Concentration is measured by UV-Vis.

### SDS-PAGE



Cynomolgus / Rhesus CTLA4 / CD152 Protein (Fc Tag) SDS-PAGE