

Human CD22 (aa 176-687, His Tag) recombinant protein



Catalog Number: 502730

General Information

Gene Name Synonym

B-lymphocyte cell adhesion molecule; Sialic acid-binding Ig-like lectin 2; T-cell surface antigen Leu-14

Protein Construction

A DNA sequence encoding the human CD22 (Q32M46) (Trp176-Arg687) was fused with a polyhistidine tag at the C-terminus.

Organism

Human

Expression Host

Human Cells

QC Testing

Purity

> 90 % as determined by SDS-PAGE

Endotoxin

< 1.0 EU per μ g of the protein as determined by the LAL method

Stability

Samples are stable for up to twelve months from date of receipt at -70°C

Predicted N terminal

Trp 176

Molecular Mass

The recombinant human CD22 consists of 523

amino acids and predicts a molecular mass of 58.5 kDa. In SDS-PAGE under reducing conditions, the apparent molecular mass of the recombinant protein is approximately 90-100 kDa due to glycosylation.

Formulation

Lyophilized from sterile PBS, pH 7.4.

1. 5 % trehalose and mannitol are added as protectants before lyophilization.

2. Please contact us for any concerns or special requirements.

Usage Guide

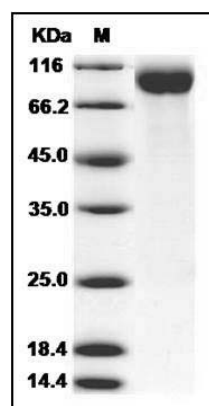
Storage

Store it under sterile conditions at -20°C to -80°C. It is recommended that the protein be aliquoted for optimal storage. Avoid repeated freeze-thaw cycles.

Reconstitution

Adding sterile water, prepare a stock solution of 0.25 mg/ml. Concentration is measured by UV-Vis.

SDS-PAGE



Human Siglec-2 / CD22 Protein (aa 176-687, His Tag) SDS-PAGE