

# Rat CLEC4D (Fc Tag) recombinant protein



Catalog Number: 502631

## General Information

### Gene Name Synonym

C-type lectin superfamily member 8

### Protein Construction

A DNA sequence encoding the rat CLEC4D (Q69FH1) (Trp48-Lys218) was expressed with Fc region of human IgG1 at the N-terminus.

### Organism

Rat

### Expression Host

Human Cells

## QC Testing

### Purity

> 95 % as determined by SDS-PAGE

### Endotoxin

< 1.0 EU per  $\mu\text{g}$  of the protein as determined by the LAL method

### Stability

Samples are stable for up to twelve months from date of receipt at  $-70^{\circ}\text{C}$

### Predicted N terminal

Glu

### Molecular Mass

The recombinant rat CLEC4D comprises 431

amino acids and predicts a molecular mass of 48.4 kDa. The apparent molecular mass of the recombinant protein is approximately 53 kDa in SDS-PAGE under reducing conditions due to glycosylation.

### Formulation

Lyophilized from sterile PBS, pH 7.4.

1. 5 % trehalose and mannitol are added as protectants before lyophilization.

2. Please contact us for any concerns or special requirements.

## Usage Guide

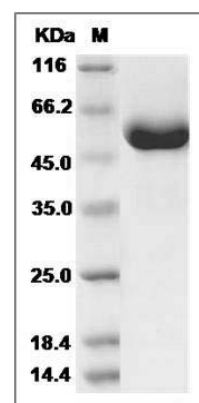
### Storage

Store it under sterile conditions at  $-20^{\circ}\text{C}$  to  $-80^{\circ}\text{C}$ . It is recommended that the protein be aliquoted for optimal storage. Avoid repeated freeze-thaw cycles.

### Reconstitution

Adding sterile water, prepare a stock solution of 0.25 mg/ml. Concentration is measured by UV-Vis.

### SDS-PAGE



Rat CLEC4D / CLECSF8 Protein (Fc Tag) SDS-PAGE