

# Human CCN4/WISP1 (His Tag) recombinant protein



Catalog Number: 502578

## General Information

### Gene Name Synonym

CCN family member 4; Wnt-1-induced secreted protein

### Protein Construction

A DNA sequence encoding the human WISP1 (NP\_003873.1) (Met 1-Asn 367) was expressed with a C-terminal polyhistidine tag.

### Organism

Human

### Expression Host

Human Cells

## QC Testing

### Activity

Measured in a cell proliferation assay using NRK-49F rat fibroblasts (Xu, L. et al., 2000, Gene and Dev. 14: 585.). The ED<sub>50</sub> for this effect is typically 10-25 µg/ml.

### Purity

> 95 % as determined by SDS-PAGE

### Endotoxin

< 1.0 EU per µg of the protein as determined by the LAL method

### Stability

Samples are stable for up to twelve months from date of receipt at -70°C

### Predicted N terminal

Thr 23

### Molecular Mass

The secreted recombinant human WISP1 consisting of 356 amino acids has a calculated molecular mass of 39 kDa. As a result of glycosylation, it migrates as an approximately 55 kDa protein in SDS-PAGE under reducing conditions.

### Formulation

- Lyophilized from sterile PBS, pH 7.4
1. 5 % trehalose and mannitol are added as protectants before lyophilization.
  2. Please contact us for any concerns or special requirements.

## Usage Guide

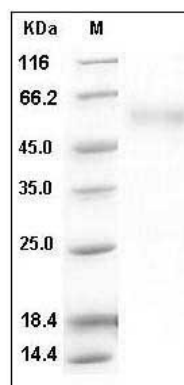
### Storage

Store it under sterile conditions at -20°C to -80°C. It is recommended that the protein be aliquoted for optimal storage. Avoid repeated freeze-thaw cycles.

### Reconstitution

Adding sterile water, prepare a stock solution of 0.25 mg/ml. Concentration is measured by UV-Vis.

### SDS-PAGE



Human CCN4 / WISP1 Protein (His Tag) SDS-PAGE