

Mouse TFPI (His Tag) recombinant protein



Catalog Number: 502571

General Information

Gene Name Synonym

Extrinsic pathway inhibitor; Lipoprotein-associated coagulation inhibitor

Protein Construction

A DNA sequence encoding the mouse TFPI isoform alpha (NP_035706.1) (Met 1-Lys 289) was expressed with a C-terminal polyhistidine tag.

Organism

Mouse

Expression Host

Human Cells

QC Testing

Activity

Measured by its ability to inhibit trypsin cleavage of a fluorogenic peptide substrate, Mca-RPKPVE-Nval-WRK(Dnp)-NH₂ (Anaspec, Catalog # 27114). The IC₅₀ value is < 0.5 nM, as measured in 100µL reaction mixture containing 1.25 ng trypsin (Sigma, Catalog # T4799), 10 µM substrate, 50 mM Tris, 10 mM CaCl₂, 0.15 M NaCl, 0.05% Brij 35, pH 7.5.

Purity

> 97 % as determined by SDS-PAGE

Endotoxin

< 1.0 EU per µg of the protein as determined by the LAL method

Stability

Samples are stable for up to twelve months from date of receipt at -70°C

Predicted N terminal

Leu 29

Molecular Mass

The secreted recombinant mouse TFPI consists of 272 amino acids and has a calculated molecular mass of 31 kDa. As a result of glycosylation, the recombinant protein migrates as an approximately 45 kDa protein in SDS-PAGE under reducing conditions.

Formulation

Lyophilized from sterile PBS, pH 7.4

1. 5 % trehalose and mannitol are added as protectants before lyophilization.

2. Please contact us for any concerns or special requirements.

Usage Guide

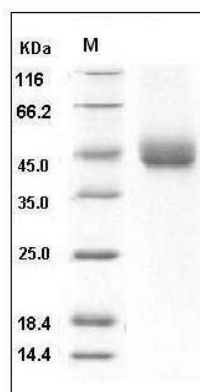
Storage

Store it under sterile conditions at -20°C to -80°C. It is recommended that the protein be aliquoted for optimal storage. Avoid repeated freeze-thaw cycles.

Reconstitution

Adding sterile water, prepare a stock solution of 0.25 mg/ml. Concentration is measured by UV-Vis.

SDS-PAGE



Mouse TFPI / LACI / EPI Protein (His Tag) SDS-PAGE