

# Mouse Cathepsin / CTSH (His Tag) recombinant protein



Catalog Number: 502526

## General Information

### Gene Name Synonym

Cathepsin B3; Cathepsin BA; Cathepsin H mini chain; Cathepsin H; Cathepsin H heavy chain; Cathepsin H light chain

### Protein Construction

A DNA sequence encoding the mouse CTSH (AAA82966.1) (Ala21-Val333) was expressed with a C-terminal polyhistidine tag.

### Organism

Mouse

### Expression Host

Human Cells

## QC Testing

### Purity

> 90 % as determined by SDS-PAGE

### Endotoxin

< 1.0 EU per  $\mu\text{g}$  of the protein as determined by the LAL method

### Stability

Samples are stable for up to twelve months from date of receipt at  $-70^{\circ}\text{C}$

### Predicted N terminal

Ala 21

### Molecular Mass

The recombinant mouse CTSH comprises 324 amino acids and has a predicted molecular mass of 36.6 kDa. The apparent molecular mass of the protein is approximately 42 kDa in SDS-PAGE under reducing conditions.

### Formulation

Lyophilized from sterile PBS, pH 7.4.

1. 5 % trehalose and mannitol are added as protectants before lyophilization.
2. Please contact us for any concerns or special requirements.

## Usage Guide

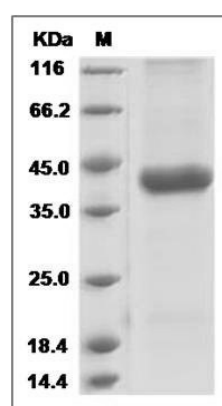
### Storage

Store it under sterile conditions at  $-20^{\circ}\text{C}$  to  $-80^{\circ}\text{C}$ . It is recommended that the protein be aliquoted for optimal storage. Avoid repeated freeze-thaw cycles.

### Reconstitution

Adding sterile water, prepare a stock solution of 0.25 mg/ml. Concentration is measured by UV-Vis.

### SDS-PAGE



Mouse Cathepsin H / CTSH Protein (His Tag) SDS-PAGE