

# Human CYTL1 / Cytokine-like 1 (Fc Tag) recombinant protein



Catalog Number: 502516

## General Information

### Gene Name Synonym

Protein C17

### Protein Construction

A DNA sequence encoding the human CYTL1 (NP\_061129.1) (Met1-Arg136) was expressed with the Fc region of mouse IgG1 at the C-terminus.

### Organism

Human

### Expression Host

Human Cells

## QC Testing

### Purity

> 90 % as determined by SDS-PAGE.

### Endotoxin

< 1.0 EU per  $\mu\text{g}$  protein as determined by the LAL method.

### Stability

Samples are stable for up to twelve months from date of receipt at  $-70^{\circ}\text{C}$

### Predicted N terminal

Thr 23

### Molecular Mass

The recombinant human CYTL1 consists 348 amino acids and predicts a molecular mass of 39.8 kDa.

### Formulation

Lyophilized from sterile PBS, pH 7.4.

1. 5 % trehalose and mannitol are added as protectants before lyophilization.

2. Please contact us for any concerns or special requirements.

## Usage Guide

### Storage

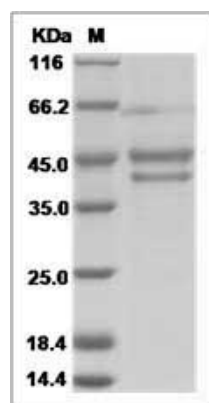
Store it under sterile conditions at  $-20^{\circ}\text{C}$  to  $-80^{\circ}\text{C}$ .

It is recommended that the protein be aliquoted for optimal storage. Avoid repeated freeze-thaw cycles.

### Reconstitution

Adding sterile water, prepare a stock solution of 0.25 mg/ml. Concentration is measured by UV-Vis.

### SDS-PAGE



Human CYTL1 / Cytokine-like 1 Protein (Fc Tag)