

# Human peptidylamidoglycolate lyase (Fc Tag) recombinant protein



Catalog Number: 502496

## General Information

### Gene Name Synonym

Peptidylglycine alpha-hydroxylating monooxygenase; Peptidyl-alpha-hydroxyglycine alpha-amidating lyase; Peptidylamidoglycolate lyase

### Protein Construction

A DNA sequence encoding the human PAM (NP\_620176.1) (Met1-Val710) was expressed with the Fc region of human IgG1 at the C-terminus.

### Organism

Human

### Expression Host

Human Cells

## QC Testing

### Purity

> 90 % as determined by SDS-PAGE

### Endotoxin

< 1.0 EU per  $\mu\text{g}$  protein as determined by the LAL method.

### Stability

Samples are stable for up to twelve months from date of receipt at  $-70^{\circ}\text{C}$

### Predicted N terminal

Phe 21

## Molecular Mass

The recombinant human PAM consists 928 amino acids and predicts a molecular mass of 104 kDa.

### Formulation

Lyophilized from sterile PBS, pH 7.4.

1. 5 % trehalose and mannitol are added as protectants before lyophilization.

2. Please contact us for any concerns or special requirements.

## Usage Guide

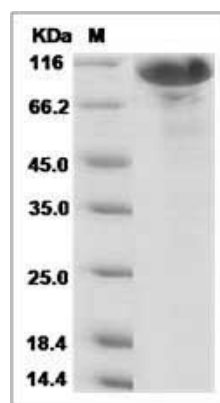
### Storage

Store it under sterile conditions at  $-20^{\circ}\text{C}$  to  $-80^{\circ}\text{C}$ . It is recommended that the protein be aliquoted for optimal storage. Avoid repeated freeze-thaw cycles.

### Reconstitution

Adding sterile water, prepare a stock solution of 0.25 mg/ml. Concentration is measured by UV-Vis.

### SDS-PAGE



Human PAM / Peptidylglycine alpha-Amidating Monooxygenase Protein (Fc Tag)