

# Cynomolgus NKG2A / NKG2 / CD159A / KLRC1 (Fc Tag) recombinant protein



Catalog Number: 502488

## General Information

### Gene Name Synonym

NKG2A protein

### Protein Construction

A DNA sequence encoding the cynomolgus KLRC1 (Q9MZJ2) (Pro94-Leu233) was expressed with the Fc region of human IgG1 at the N-terminus.

### Organism

Cynomolgus

### Expression Host

Human Cells

## QC Testing

### Purity

> 85 % as determined by SDS-PAGE

### Endotoxin

< 1.0 EU per µg of the protein as determined by the LAL method

### Stability

Samples are stable for up to twelve months from date of receipt at -70°C

### Predicted N terminal

Glu

### Molecular Mass

The recombinant cynomolgus KLRC1 is a disulfide-linked homodimer. The reduced

monomer comprises 400 amino acids and has a calculated molecular mass of 44.4 KDa. The apparent molecular mass of the protein is approximately 47-55 KDa respectively in SDS-PAGE.

### Formulation

Lyophilized from sterile PBS, pH 7.4.

1. 5 % trehalose and mannitol are added as protectants before lyophilization.

2. Please contact us for any concerns or special requirements.

## Usage Guide

### Storage

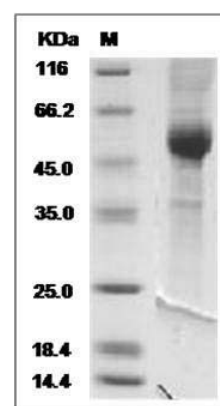
Store it under sterile conditions at -20°C to -80°C.

It is recommended that the protein be aliquoted for optimal storage. Avoid repeated freeze-thaw cycles.

### Reconstitution

Adding sterile water, prepare a stock solution of 0.25 mg/ml. Concentration is measured by UV-Vis.

### SDS-PAGE



Cynomolgus NKG2A / NKG2 / CD159A / KLRC1 Protein (Fc Tag) SDS-PAGE