

Human SynCam/CADM1/TSLC1/IGSF4 (His Tag) recombinant protein



Catalog Number: 502412

General Information

Gene Name Synonym

Immunoglobulin superfamily member 4; Nectin-like protein 2; Spermatogenic immunoglobulin superfamily; Synaptic cell adhesion molecule; Tumor suppressor in lung cancer 1

Protein Construction

A DNA sequence encoding the human CADM1 (NP_055148.3) extracellular domain (Met 1-His 374) was expressed, fused with a polyhistidine tag at the C-terminus.

Organism

Human

Expression Host

Human Cells

QC Testing

Activity

Measured by its binding ability in a functional ELISA. Immobilized recombinant human CADM1 at 2 µg/ml (100 µl/well) can bind biotinylated human CRTAM with a linear range of 12.5-400 ng/ml.

Purity

> 94 % as determined by SDS-PAGE

Endotoxin

< 1.0 EU per µg of the protein as determined by the LAL method

Stability

Samples are stable for up to twelve months from date of receipt at -70°C

Predicted N terminal

Gln 45

Molecular Mass

The secreted recombinant human CADM1 consists of 341 amino acids after removal of the signal peptide and has a predicted molecular mass of 38.5 kDa. As a result of glycosylation, the apparent molecular mass of rh CADM1 is approximately 70-80 kDa in SDS-PAGE under reducing conditions.

Formulation

Lyophilized from sterile PBS, pH 7.4

1. 5 % trehalose and mannitol are added as protectants before lyophilization.

2. Please contact us for any concerns or special requirements.

Usage Guide

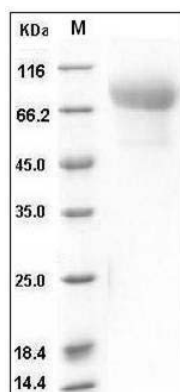
Storage

Store it under sterile conditions at -20°C to -80°C. It is recommended that the protein be aliquoted for optimal storage. Avoid repeated freeze-thaw cycles.

Reconstitution

Adding sterile water, prepare a stock solution of 0.25 mg/ml. Concentration is measured by UV-Vis.

SDS-PAGE



Human SynCam / CADM1 / TSLC1 / IGSF4 Protein

Human SynCam/CADM1/TSLC1/IGSF4 (His Tag) recombinant protein



Catalog Number: 502412

(His Tag) SDS-PAGE